



COMPOSIT

PIPE SYSTEMS FOR MINING AND MINERAL PROCESSING

PRODUCT LIFE CYCLE

PRODUCT LINE

COMPOSIT

FLEX HOSE WITH
COUPLINGS



- *quarry dewatering*
- *1st, 2nd, 3rd - grinding stage*
- *filtration stage*

FLANGED
HOSE



- *quarry dewatering*
- *1st, 2nd, 3rd - grinding stage*
- *filtration stage*

RUBBER
BEND



- *quarry dewatering*
- *1st, 2nd, 3rd - grinding stage*
- *filtration stage*

RUBBER-LINED
STEEL BEND



- *1st, 2nd, 3rd - grinding stage*
- *filtration stage*
- *tailings*

LENS
EXPANSION JOINTS



- *1st, 2nd, 3rd - grinding stage*
- *filtration stage*
- *tailings*

RUBBER-LINED
STEEL PIPE



- *1st, 2nd, 3rd - grinding stage*
- *filtration stage*
- *tailings*

SPECIAL
PIPE STUBS



- *1st, 2nd, 3rd - grinding stage*

QUARRY DEWATERING

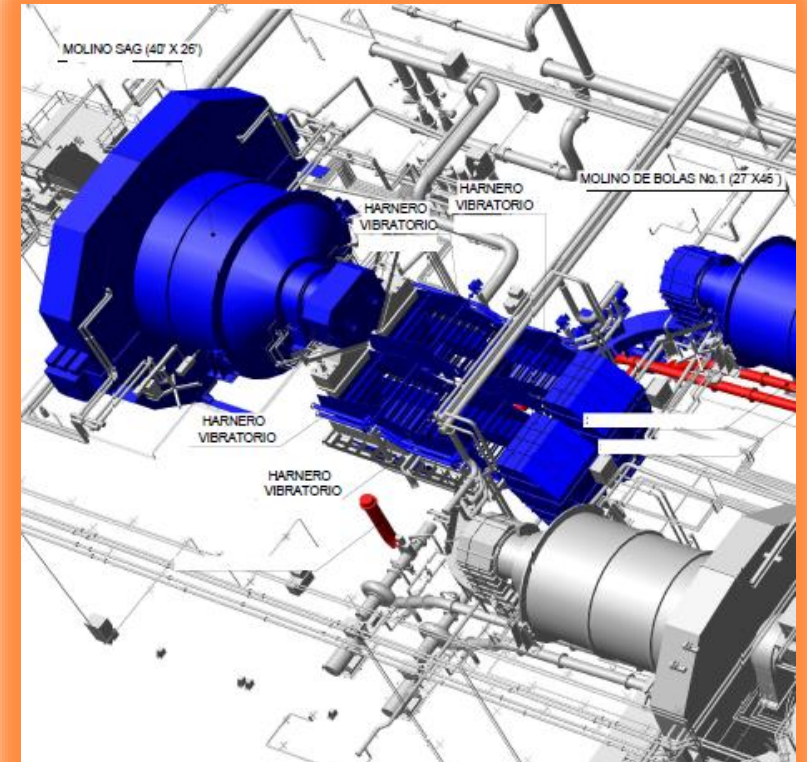
COMPOSIT



The COMPOSIT rubber pipes' flexibility and abrasion resistance are assuring the trouble-free dewatering operations on the sharp quarry thresholds. The product life cycle at this process stage is up to 36 months

1st - GRINDING STAGE

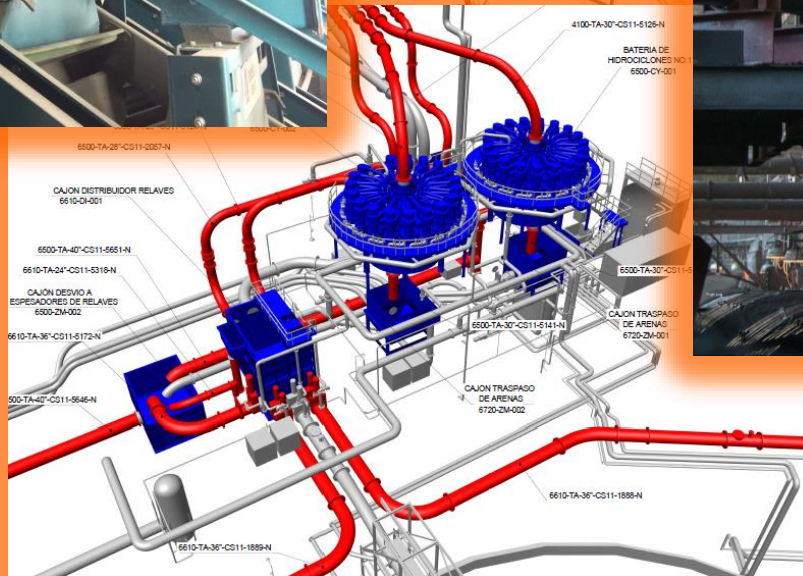
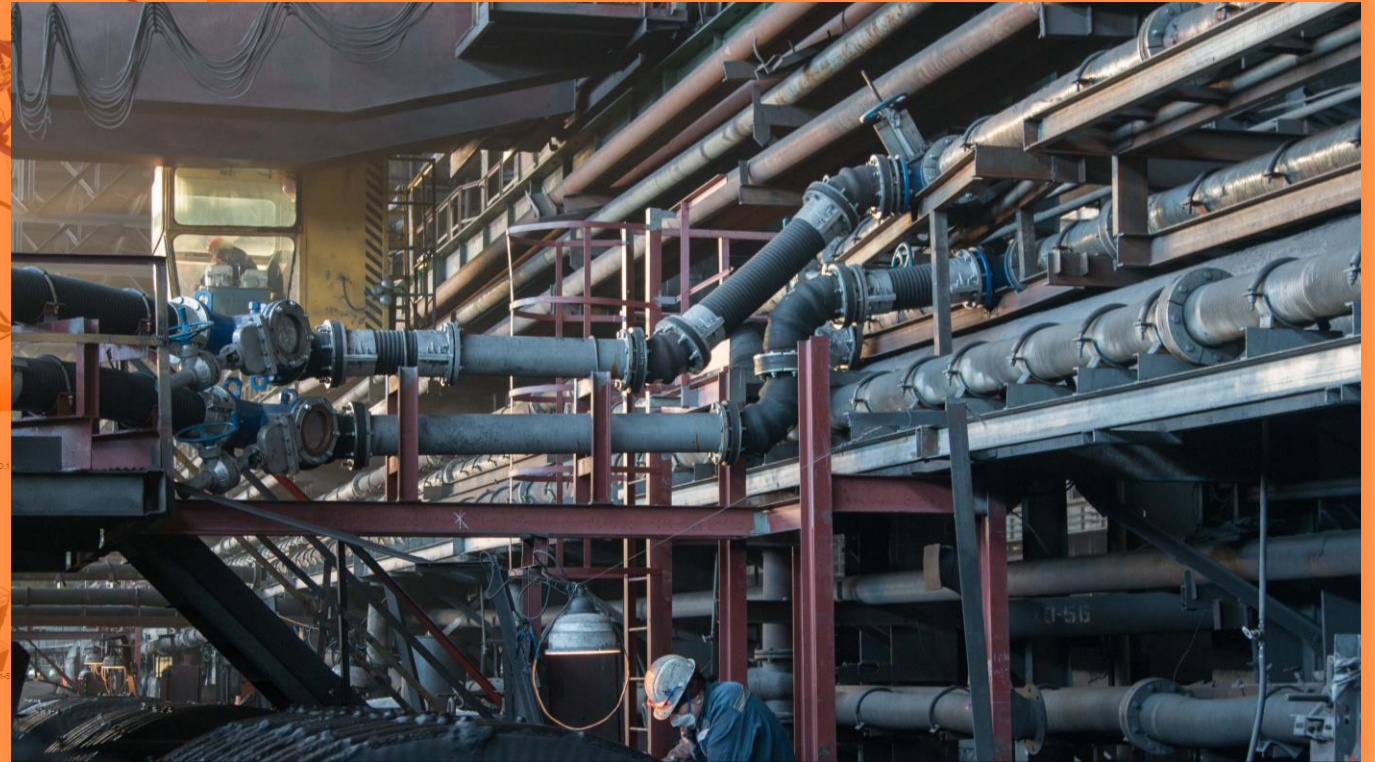
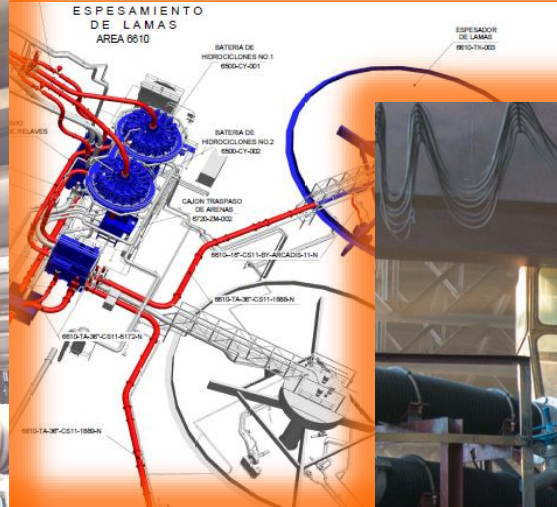
COMPOSIT



The COMPOSIT rubber pipes with couplings installed after the ball mill at the 1st - grinding stage. The product life cycle is up to 12 months. This is the most abrasive stage of grinding process with the slurry particle size up to 10 mm

2nd and 3rd - GRINDING STAGES

COMPOSIT



The COMPOSIT pipes' life cycle at the 2nd and 3rd - grinding stages is up to 60 months

FILTRATION STAGE

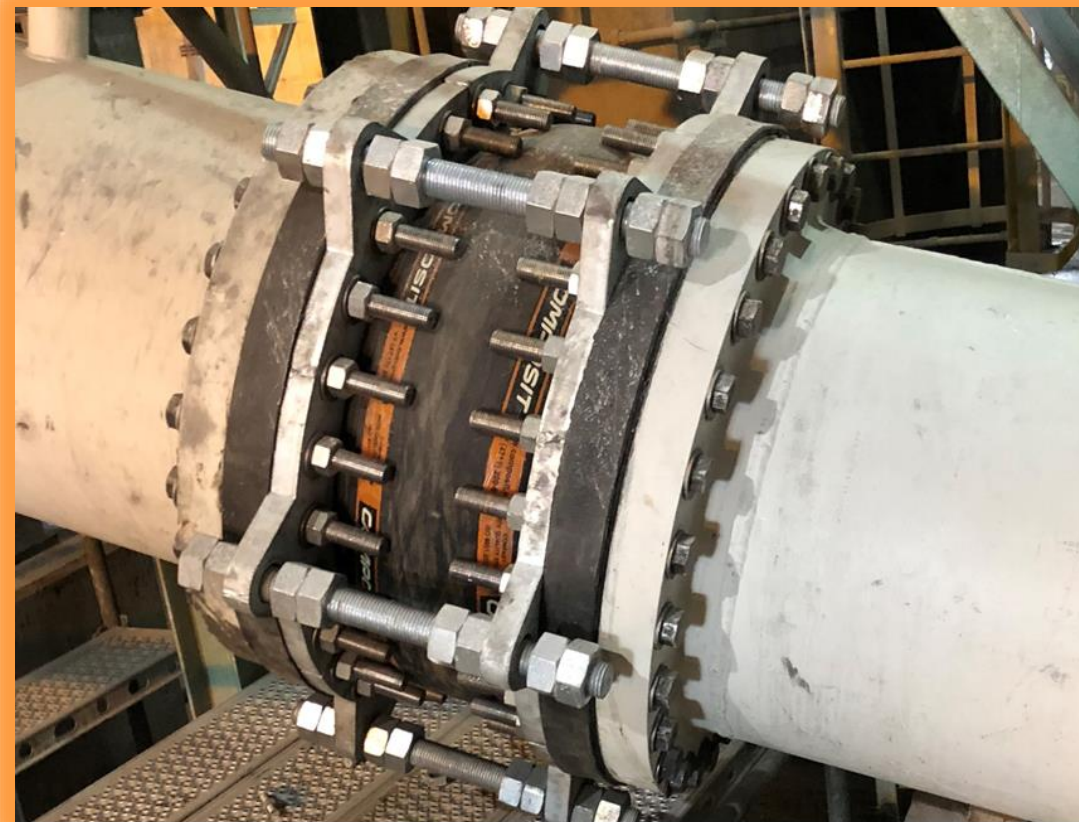
COMPOSIT



The COMPOSIT rubber pipes installed on the filtration stage. The product life cycle is up to 120 months

TAILINGS

COMPOSIT



The COMPOSIT rubber-lined steel pipes with lens expansion joints for tailings. The product life cycle is up to 120 months



COMPOSIT

Thanks for your attention



facebook.com/compositllc



[@LLC_Composit](https://twitter.com/LLC_Composit)



COMPOSIT LLC
49 Solovinaya St.,
Kursk, Russia 305022



+7 (4712) 200-600

COMPOSIT

